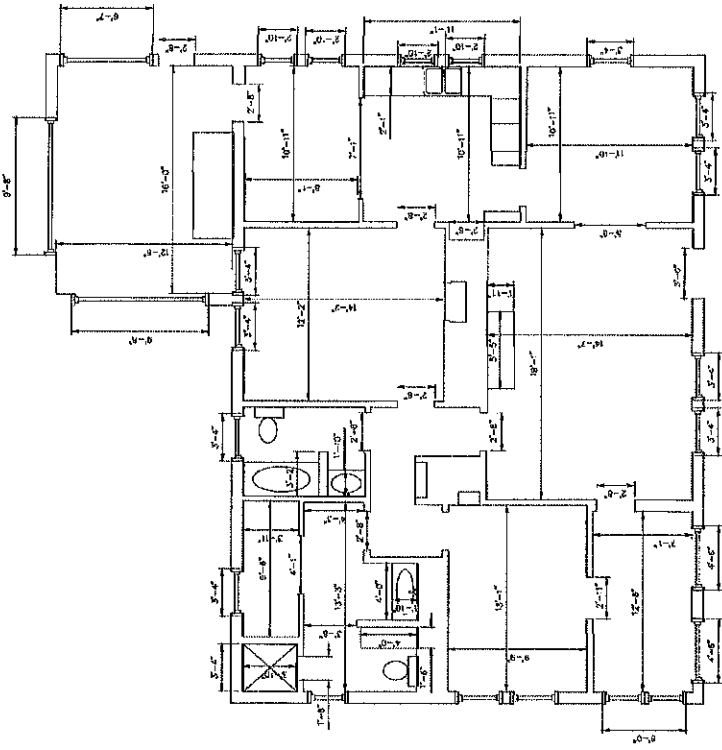


RFP # 2024-0305.02

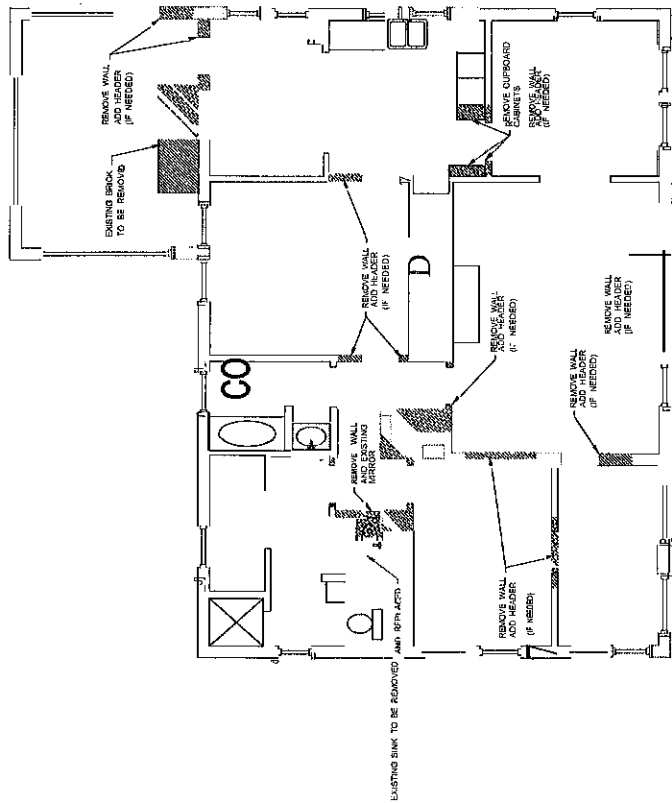
**RFP Addendum 2: Questions and Answers
Temple Museum Renovations and Improvements Phase I**

Will there be drawings of the inside layout and elevations added, or will each contractor need to do their own drawings/measurements?

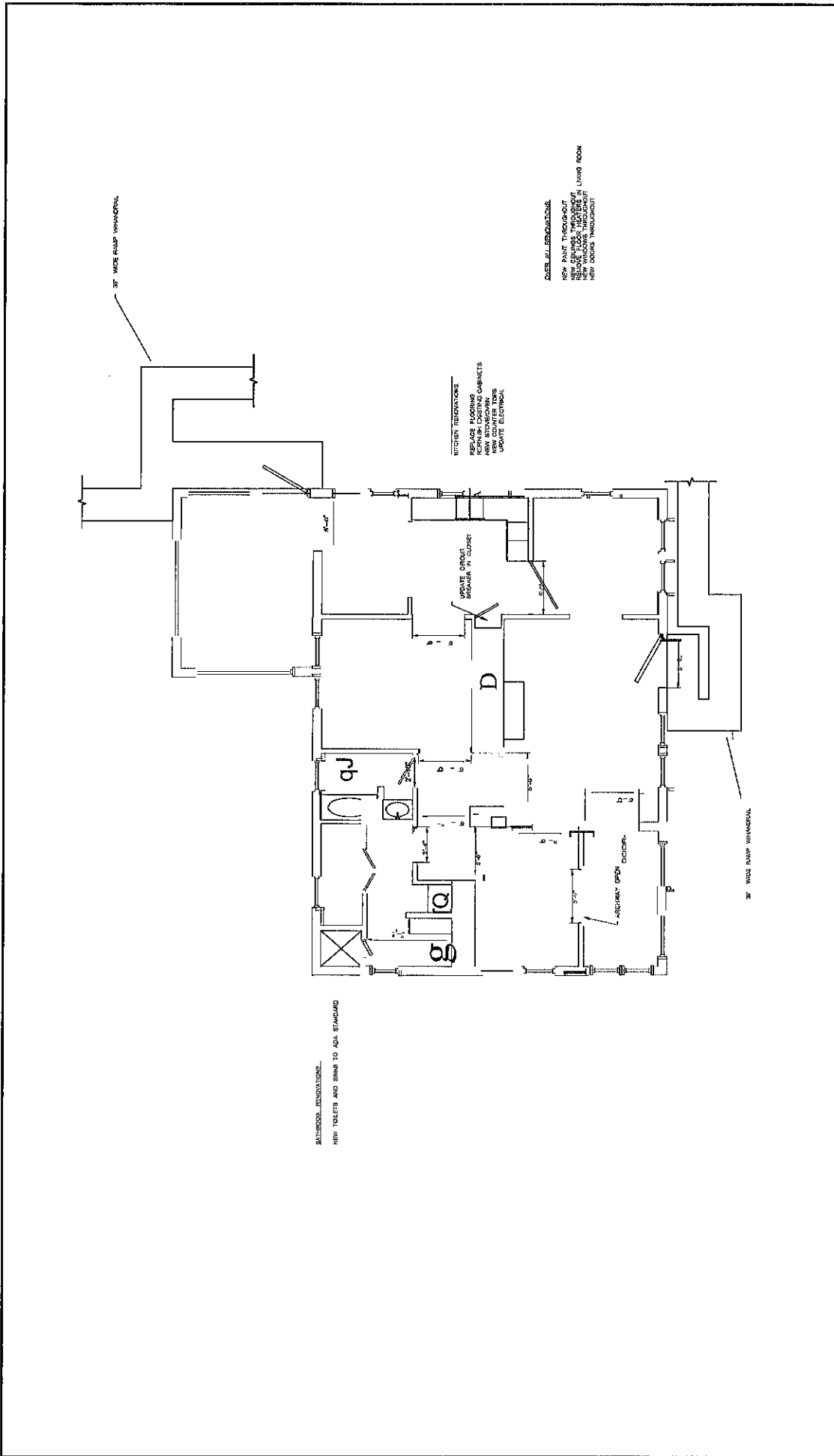
Please see attached drawings.



REVISIONS	CITY OF TEMPLE, GEORGIA		
	TEMPLE MUSEUM		
	EXISTING FLOOR PLAN		
DRAWN BY: SKY/SJS	DATE: 1-3-23	SCALE: 1/4" = 1'-0"	DATE: DECEMBER 2023
CHECKED BY: GJA	SHEET 2 OF 4		
		ATLANTA, ALABAMA 2000 W. BIRMINGHAM BLVD.	



REVISIONS	CITY OF TEMPLE, GEORGIA
	TEMPLE MUSEUM
	DEMOLITION PLAN
DRAWN: CRIBB	SCALE: 1/4" = 1'-0"
CHECKED: GJA	DATE: DECEMBER 2003
	ATLANTA
	TEMPLE, MISSISSIPPI
	THURGOOD
	ALLEN
	ENG'NEERS
	SHEET 3 OF 4



BATHROOM RENOVATIONS
 NEW TOILETS AND SINK TO ADA STANDARD

KITCHEN RENOVATIONS
 REPLACE FLOORING
 REPLACE CABINETS
 NEW STOVE/COOKER
 NEW COUNTER TOPS
 UPDATE ELECTRICAL

OTHER ALL RENOVATIONS
 NEW PAINT THROUGHOUT
 NEW CEILING THROUGHOUT
 NEW FLOOR THROUGHOUT
 NEW WALLS THROUGHOUT
 NEW DOORS THROUGHOUT

36" WIDE RAMP WINDOW

36" WIDE RAMP WINDOW

REVISIONS	CITY OF TEMPLE, GEORGIA
	TEMPLE MUSEUM
	PROPOSED FLOOR PLAN
DESIGN CHECKED	
DRAWN	CLM
SCALE: 1/4" = 1'-0"	DATE: DECEMBER, 2023
ATLANTA, GEORGIA 405 W. PINE STREET, SUITE 200 TEL: 404.525.1111 WWW.TUSENGINEERS.COM	
SHEET 4 OF 4	